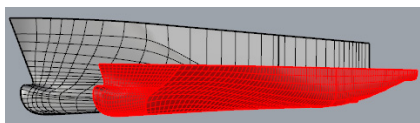




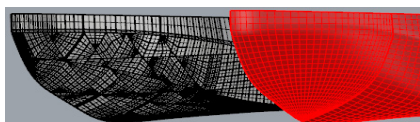
## Panel generation with MARIN plug-ins in Rhinoceros

In recent years, MARIN has created plug-ins for the well-known Rhinoceros NURBS modelling package. With these plug-ins you can create panels for MARIN calculation programs like RAPID, DIFFRAC and PARNASSOS with unparalleled speed and accuracy.

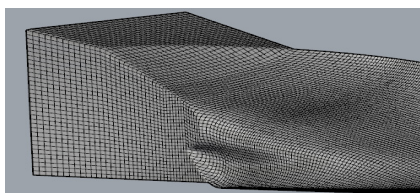
### Examples



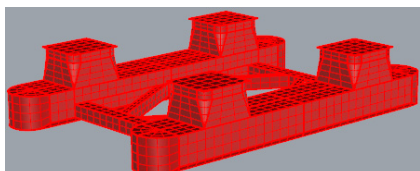
*RAPID panels on hull with extra refinement on bulb*



*RAPID panels created on polysurface obtained from NAPA*



*Aft ship grid for PARNASSOS*



*Structured grid on semi-submersible for DIFFRAC*

For more information contact the  
MARIN Software Group  
T + 31 317 49 32 37  
E [msg@marin.nl](mailto:msg@marin.nl)

### Unique features

MARIN has leveraged the unique features of Rhinoceros to create a cutting edge tool for panel generation. Think for example of the following aspects:

- Rhinoceros can import your hull definitions from a large set of file formats, including IGES, STEP, AutoCad and Solidworks. Most CAD packages can export to one or more of these formats, giving seamless transfer between your CAD package of choice and panel generation.
- Use of MARIN plug-ins alongside other Rhinoceros plug-ins like Grasshopper3D and Orca3D.
- Panel generation is possible on regular surfaces, polysurfaces and trimmed surfaces. The possibilities for panel generation on your ship hulls and other structures are almost unlimited.
- Easily accessed options give you full control on panel density, splits in the surface and refinement of the grid to obtain high-quality grids.

### Steps

- The client should have the latest version of Rhino installed (version 5, with service release 7 or higher).
- The client gets access to the Marin Online Documentation System (MODS) which provides easy access to the latest manuals and online help inside Rhinoceros.
- The client is asked to provide feedback on problems, tool usability, user-friendliness, and possible suggestions for new features through Marin Issue Tracking System (MITS).
- Plug-in updates will be provided, if necessary.